

ITEM NO.	PART NUMBER	DESCRIPTION	QTY.
1	SSS-2100-01	BOAT	1
2	SSS-2110-00	6-32 x 0.5in Bolt Assembly	6
3	SSS-2120-00	Linkage Driver assembly	1
4	SSS-2100-07	McMaster 61495K21	2
5	SSS-2100-08	McMaster 61495K21 Retaining Ring	4
6	SSS-2100-09	CAM INSERT	1
7	SSS-2120-01	0.25in PULLEY	1
8	SSS-3200-01	McMaster 6843K170	2
9	SSS-2100-12	PULLEY AND GEAR SHAFT	1
10	SSS-2100-14	RIGHT ANGLE BEARING PLATE	1
11	SSS-2100-13	OAR DRIVE SHAFT	1
12	SSS-2100-15	OAR DRIVING GEAR	1
13	SSS-2120-07	McMaster 6383K34	4
14	SSS-2120-04	McMaster 97633A200	16
15	SSS-2130-00	McMaster 1071K110	6
16	SSS-2100-11	OAR DRIVING BELT	1

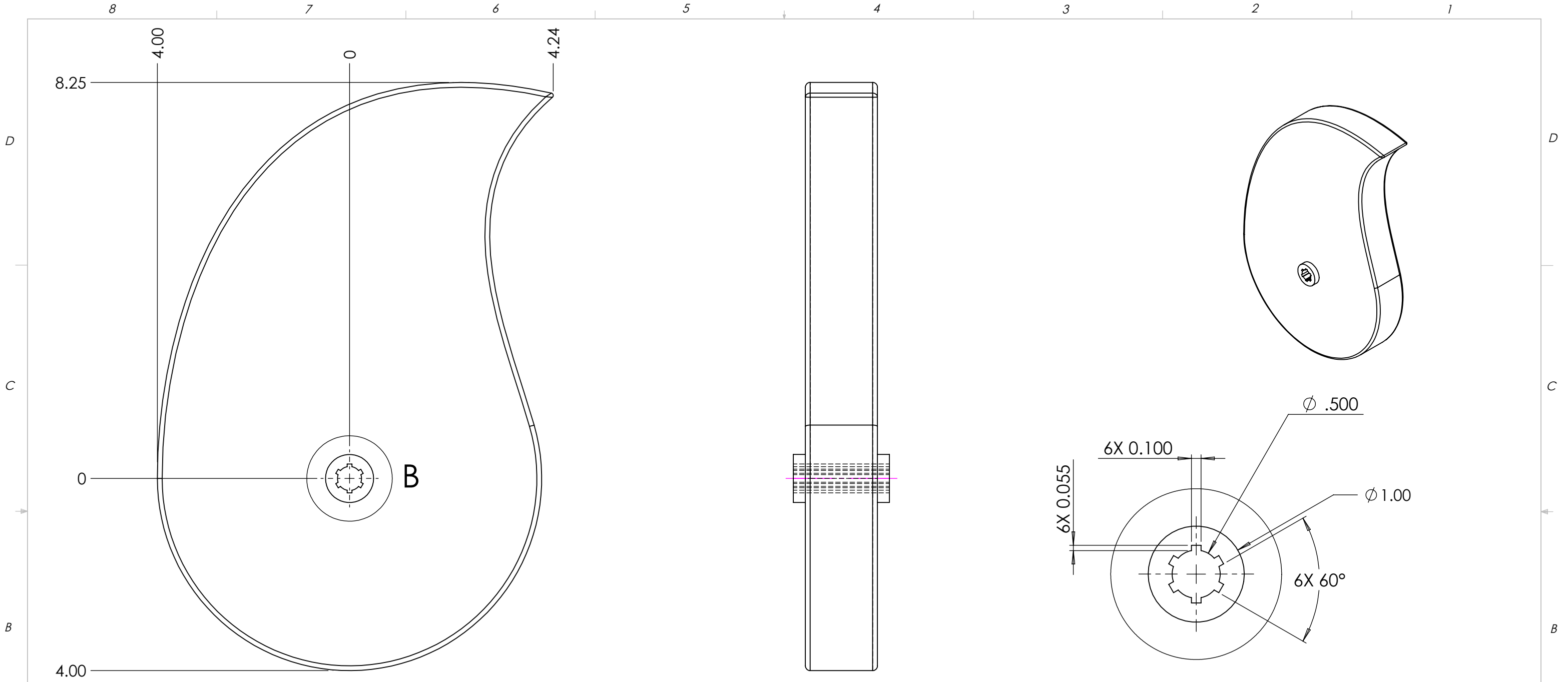
NOTES:  
 1. QUESTIONS? EMAIL LINDSEY.ANDRADE@STUDENTS.OLIN.EDU

ALL DIMENSIONS ARE IN INCHES - INTERPRET DRAWINGS PER ASME Y14.5-1994  
 TOLERANCES UNLESS OTHERWISE SPECIFIED:  
 X.X ±0.03  
 X.XX ±0.01  
 X.XXX ±0.005  
 ±0.5° 125°  
 REMOVE ALL BURRS AND SHARP EDGES 0.005 R OR CHAMFER MAX

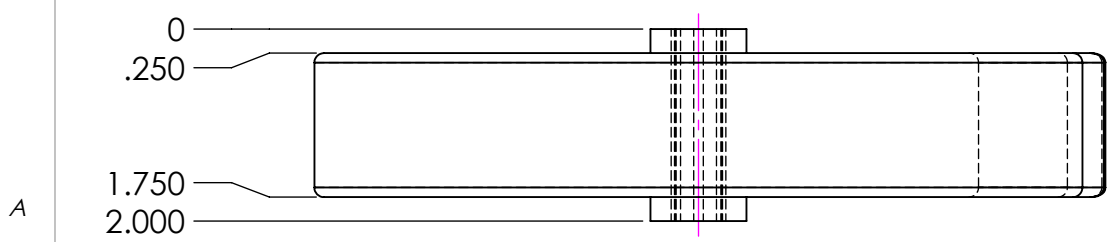
UNLESS OTHERWISE SPECIFIED:  
 QTY: 1 MATERIAL: Assorted  
 DIMENSIONS ARE IN INCHES.  
 ENGINEER landrade 11/8/2015  
 DRAWN landrade 11/8/2015  
 CHECKED arodrigues 11/8/2015



TITLE  
**BOAT**  
 SIZE **B** PART NO. **SSS-2100-00** REV **V**  
 SCALE 1:8 DO NOT SCALE PRINT SHEET 1 OF 1

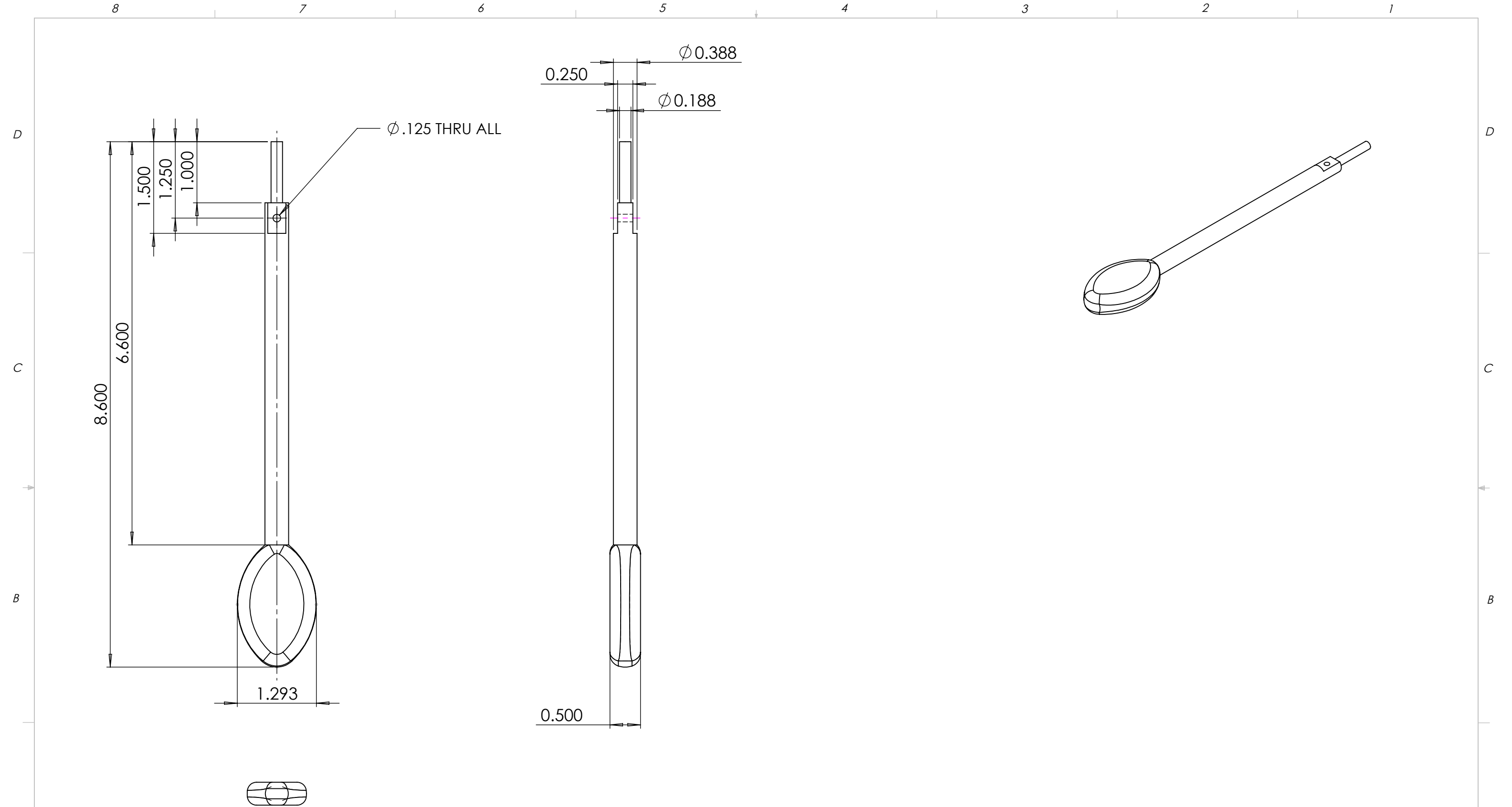


**DETAIL B**  
SCALE 1 : 1



- NOTES:**
1. SEE SSS-1110-01.SLDPRT FOR PROFILE
  2. PART SHOULD BE 3D PRINTED
  3. QUESTIONS? EMAIL LINDSEY.ANDRADE@STUDENTS.OLIN.EDU

UNLESS OTHERWISE SPECIFIED:		QTY: 43		MATERIAL: ABS	
ALL DIMENSIONS ARE IN INCHES - INTERPRET DRAWINGS PER ASME Y14.5-1994					
DIMENSIONS ARE IN INCHES.					
ENGINEER	tsaylor	11/8/2015	TITLE		
DRAWN	landrade	11/8/2015	Cam		
CHECKED	arodrigues	11/8/2015	SIZE	PART NO.	REV
TOLERANCES UNLESS OTHERWISE SPECIFIED: X.X ±0.03 X.XX ±0.01 X.XXX ±0.005			<b>B</b>	<b>SSS-1110-01</b>	<b>C</b>
REMOVE ALL BURRS AND SHARP EDGES 0.005 R OR CHAMFER MAX.			SCALE	DO NOT SCALE PRINT	SHEET 1 OF 1
±0.5° 125/			1:2		
THIS DRAWING CONTAINS INFORMATION WHICH IS CONFIDENTIAL AND PROPRIETARY TO ENGR2340, AND MAY NOT BE COPIED, DIVULGED OR USED IN PART OR AS A WHOLE, WITHOUT EXPRESSED WRITTEN CONSENT.					



- NOTES:
1. SEE SSS-2100-03.SLDPRT FOR OAR SHAPE AND DIMENSIONS
  2. PART SHOULD BE 3D PRINTED
  3. QUESTIONS? EMAIL LINDSEY.ANDRADE@STUDENTS.OLIN.EDU

ALL DIMENSIONS ARE IN INCHES - INTERPRET DRAWINGS PER ASME Y14.5-1994

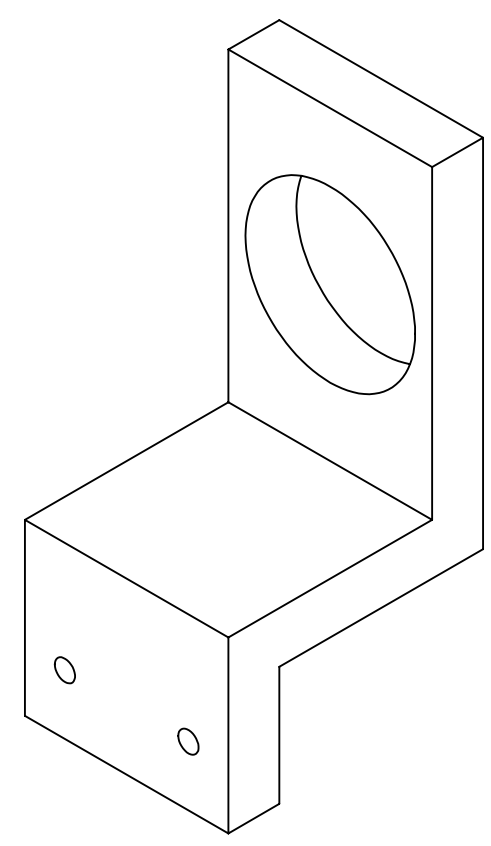
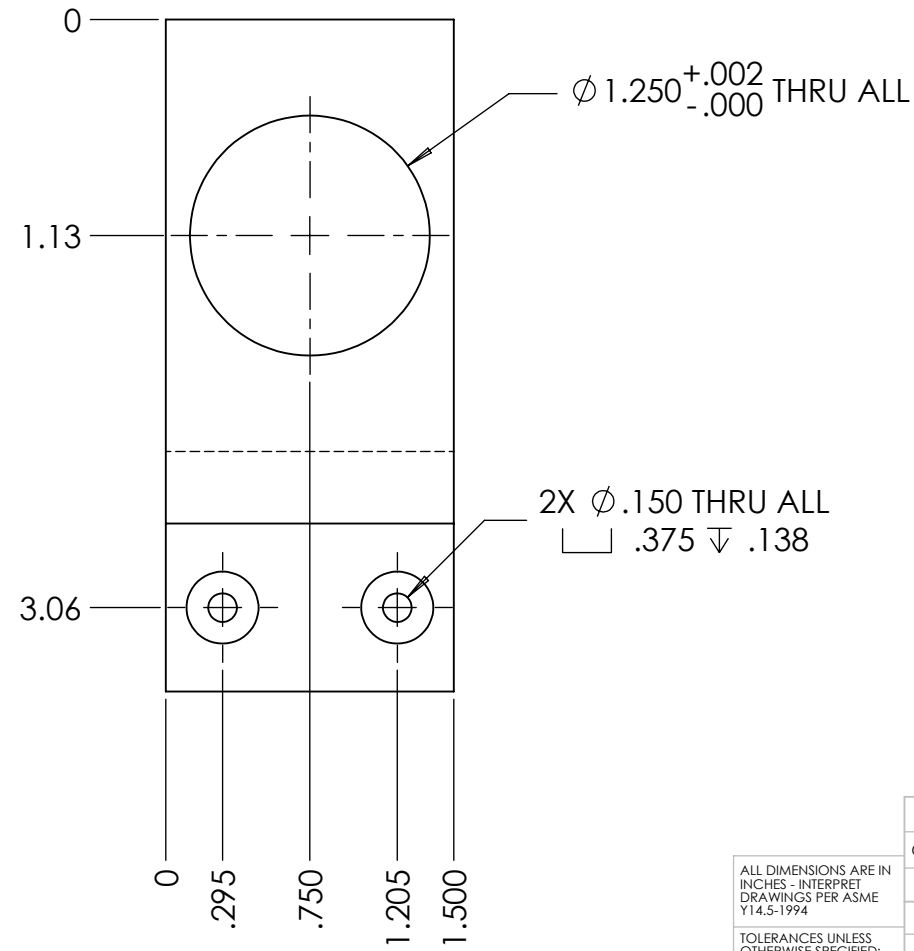
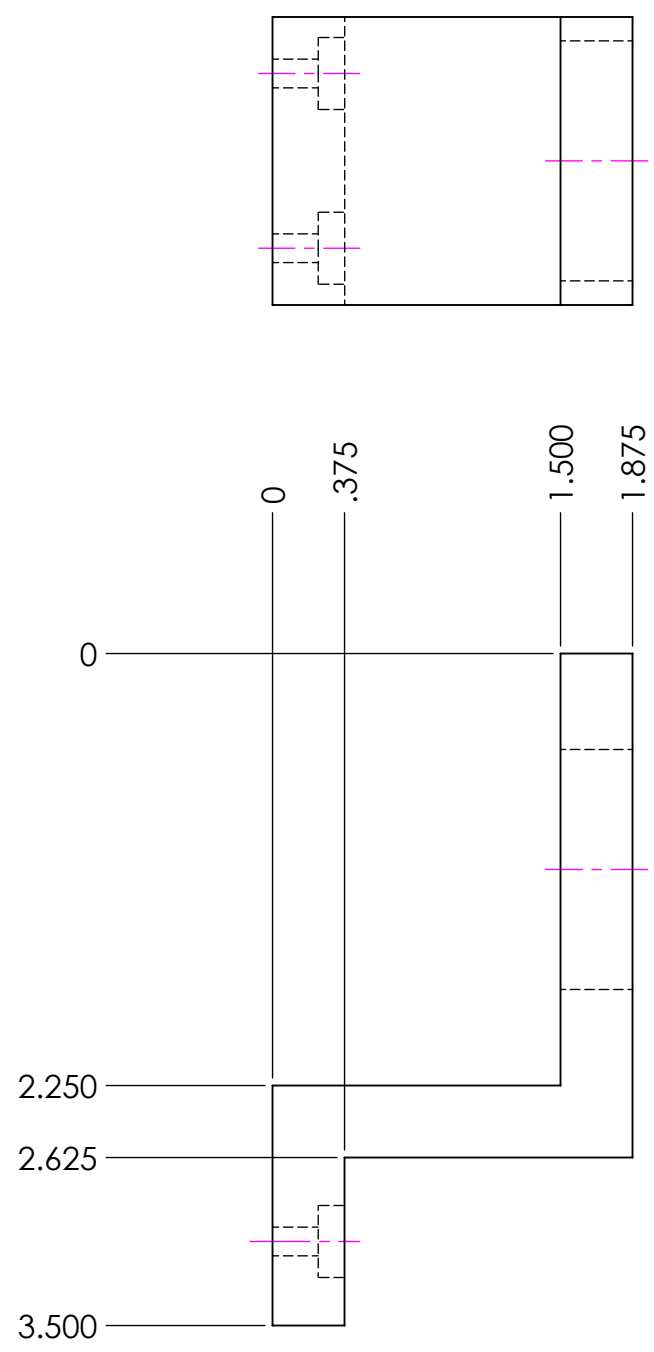
TOLERANCES UNLESS OTHERWISE SPECIFIED:  
 X.X ±0.03  
 X.XX ±0.01  
 X.XXX ±0.005

±0.5° 125/

REMOVE ALL BURRS AND SHARP EDGES 0.005 R OR CHAMFER MAX.

UNLESS OTHERWISE SPECIFIED:		
QTY: 4	MATERIAL: ABS	
DIMENSIONS ARE IN INCHES.		
ENGINEER	landrade	11/7/2015
DRAWN	landrade	11/7/2015
CHECKED	arodrigues	11/7/2015
THIS DRAWING CONTAINS INFORMATION WHICH IS CONFIDENTIAL AND PROPRIETARY TO ENGR2340, AND MAY NOT BE COPIED, DIVULGED OR USED IN PART OR AS A WHOLE, WITHOUT EXPRESSED WRITTEN CONSENT.		

TITLE		
<b>FOLLOWING OAR</b>		
SIZE	PART NO.	REV
<b>B</b>	<b>SSS-2100-03</b>	<b>B</b>
SCALE	DO NOT SCALE PRINT	SHEET 1 OF 1
2:1		



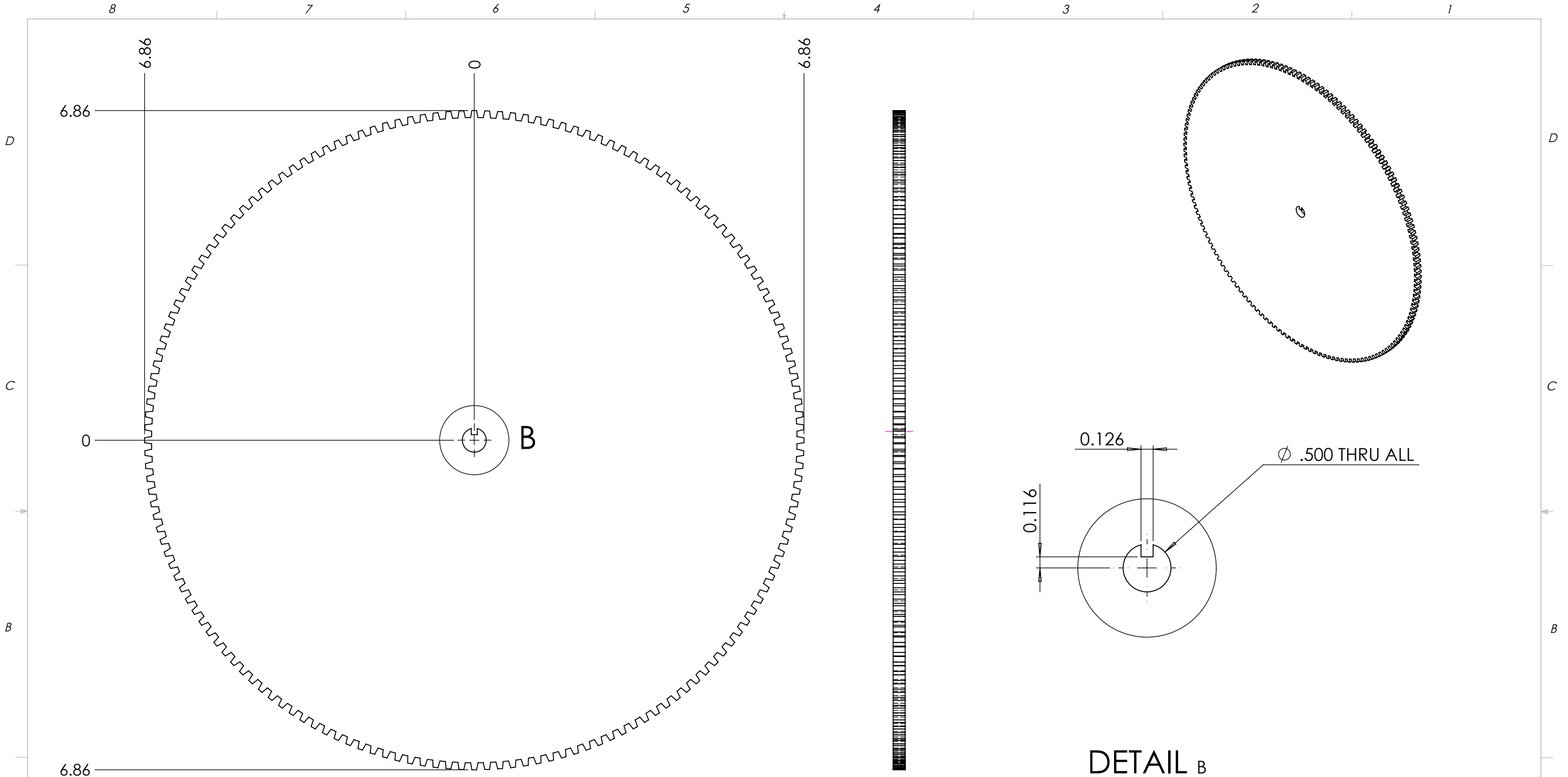
NOTES:  
 1. QUESTIONS? LINDSEY.ANDRADE@STUDENTS.OLIN.EDU

ALL DIMENSIONS ARE IN INCHES - INTERPRET DRAWINGS PER ASME Y14.5-1994  
 TOLERANCES UNLESS OTHERWISE SPECIFIED:  
 X.X ±0.03  
 X.XX ±0.01  
 X.XXX ±0.005  
 ±0.5° 125/

UNLESS OTHERWISE SPECIFIED:		
QTY: 1	MATERIAL: 6061 ALUMINUM	
DIMENSIONS ARE IN INCHES.		
ENGINEER	landrade	11/7/2015
DRAWN	landrade	11/7/2015
CHECKED	rodrigues	11/7/2015

THIS DRAWING CONTAINS INFORMATION WHICH IS CONFIDENTIAL AND PROPRIETARY TO ENGR2340, AND MAY NOT BE COPIED, DIVULGED OR USED IN PART OR AS A WHOLE, WITHOUT EXPRESSED WRITTEN CONSENT.

<b>TITLE</b> <b>RIGHT ANGLE BEARING PLATE</b>		
<b>SIZE</b> <b>B</b>	<b>PART NO.</b> <b>SSS-2100-14</b>	<b>REV</b> <b>C</b>
<b>SCALE</b> 1:1	DO NOT SCALE PRINT	SHEET 1 OF 1




- NOTES:
- SEE SSS-2100-15.SLDPRIT FOR GEAR PROFILE
  - QUESTIONS? LINDSEY.ANDRADE@STUDENTS.OLIN.EDU

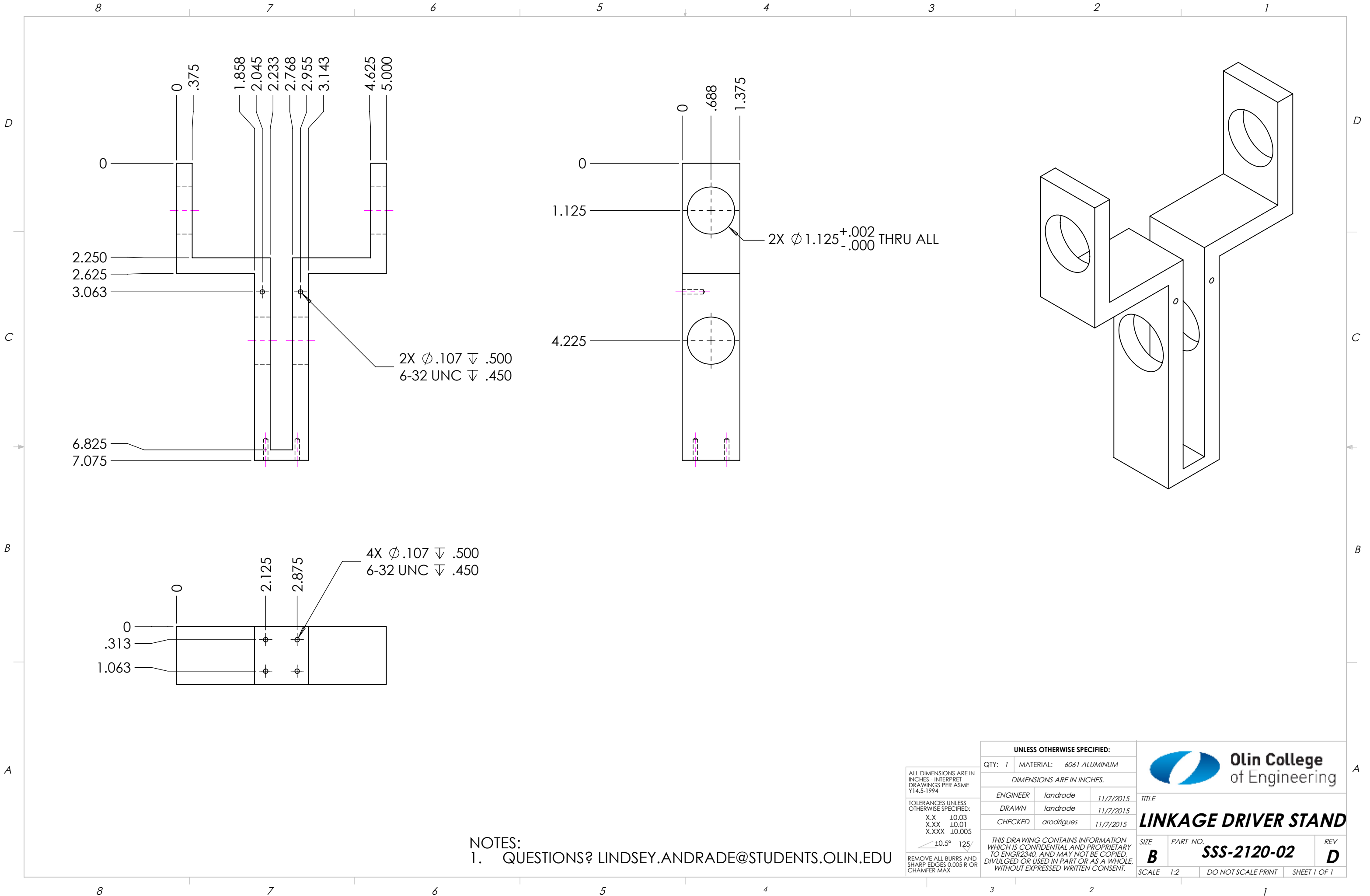
**DETAIL B**  
SCALE 1 : 1

ALL DIMENSIONS ARE IN INCHES - INTERPRET DRAWINGS PER ASME Y14.5-1994  
TOLERANCES UNLESS OTHERWISE SPECIFIED:  
X.X ±0.03  
X.XX ±0.01  
X.XXX ±0.005  
±0.5° 125/

UNLESS OTHERWISE SPECIFIED:		
QTY: 1	MATERIAL: NYLON	
DIMENSIONS ARE IN INCHES.		
ENGINEER	landrade	11/7/2015
DRAWN	landrade	11/7/2015
CHECKED	arodrigues	11/7/2015

THIS DRAWING CONTAINS INFORMATION WHICH IS CONFIDENTIAL AND PROPRIETARY TO ENGR2340, AND MAY NOT BE COPIED, DIVULGED OR USED IN PART OR AS A WHOLE, WITHOUT EXPRESSED WRITTEN CONSENT.


		
TITLE		
<b>OAR DRIVING GEAR</b>		
SIZE	PART NO.	REV
<b>B</b>	<b>SSS-2100-15</b>	<b>B</b>
SCALE 1:2	DO NOT SCALE PRINT	SHEET 1 OF 1



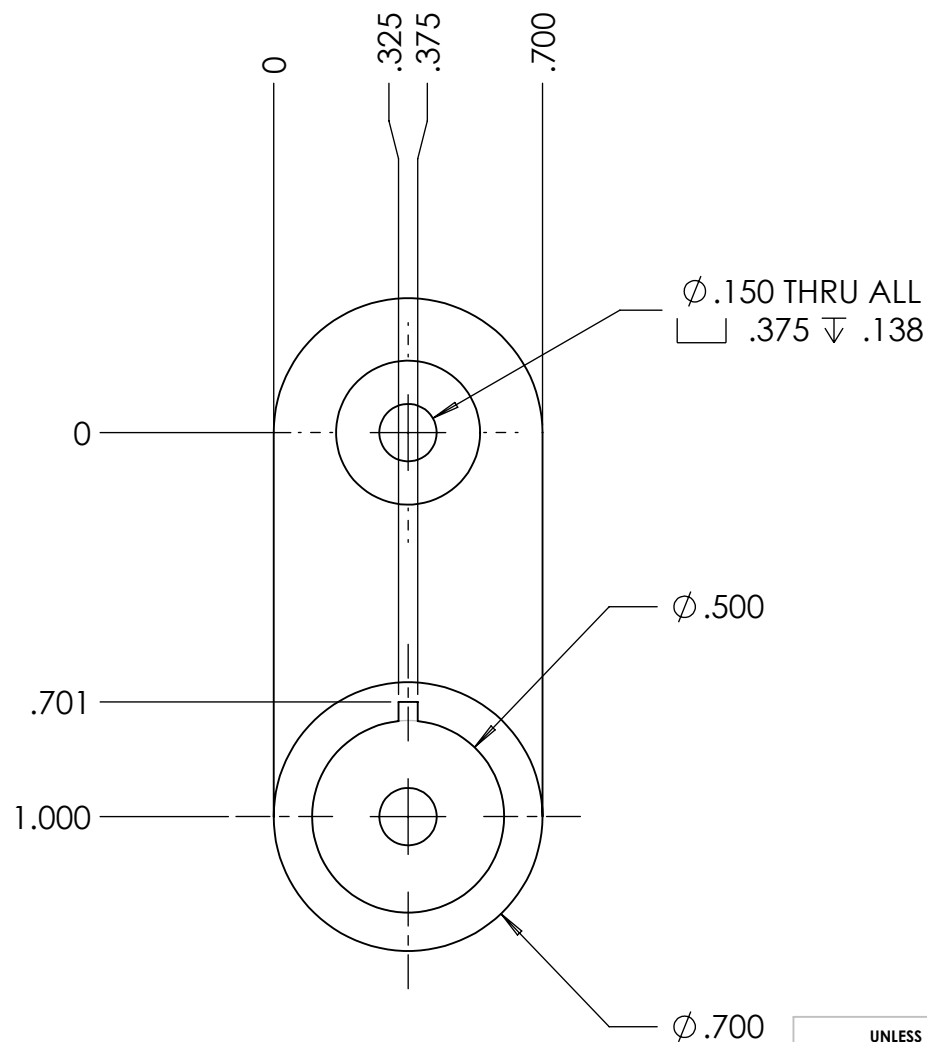
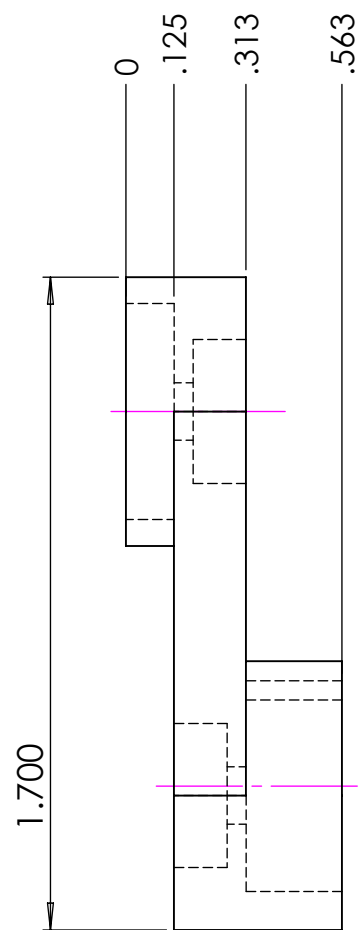
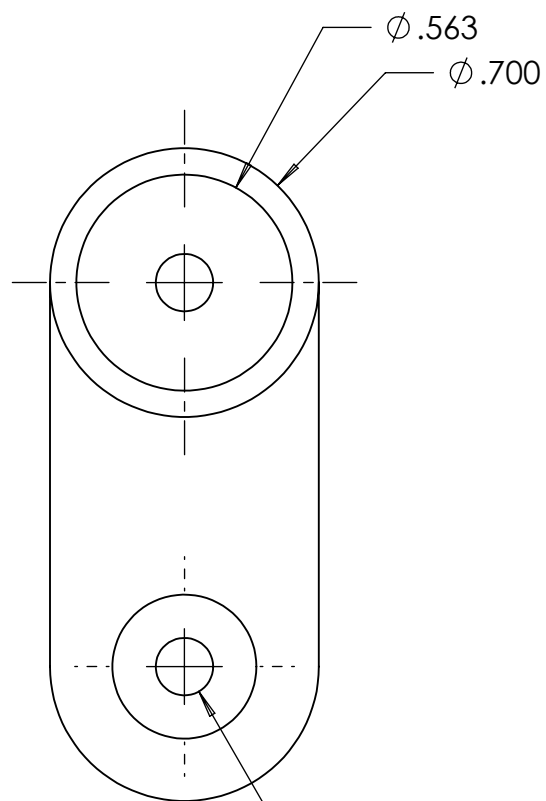
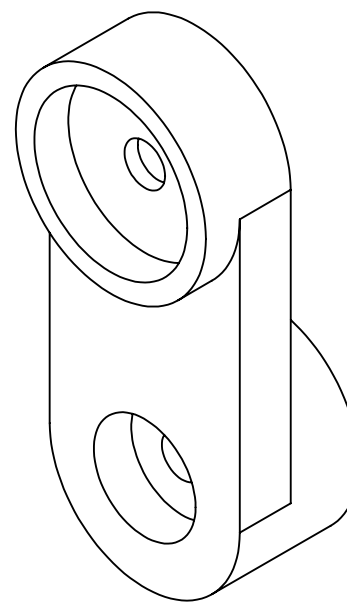
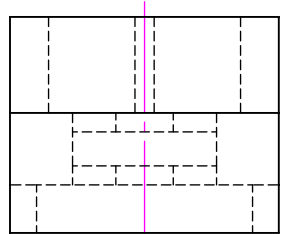
NOTES:  
 1. QUESTIONS? LINDSEY.ANDRAD@STUDENTS.OLIN.EDU

ALL DIMENSIONS ARE IN INCHES - INTERPRET DRAWINGS PER ASME Y14.5-1994  
 TOLERANCES UNLESS OTHERWISE SPECIFIED:  
 X.X ±0.03  
 X.XX ±0.01  
 X.XXX ±0.005  
 ±0.5° 125/

UNLESS OTHERWISE SPECIFIED:		
QTY: 1	MATERIAL: 6061 ALUMINUM	
DIMENSIONS ARE IN INCHES.		
ENGINEER	landrade	11/7/2015
DRAWN	landrade	11/7/2015
CHECKED	arodrigues	11/7/2015

		
TITLE		
<b>LINKAGE DRIVER STAND</b>		
SIZE	PART NO.	REV
<b>B</b>	<b>SSS-2120-02</b>	<b>D</b>
SCALE 1:2	DO NOT SCALE PRINT	SHEET 1 OF 1

THIS DRAWING CONTAINS INFORMATION WHICH IS CONFIDENTIAL AND PROPRIETARY TO ENGR2340, AND MAY NOT BE COPIED, DIVULGED OR USED IN PART OR AS A WHOLE, WITHOUT EXPRESSED WRITTEN CONSENT.



$\phi .150$  THRU ALL  
 $\square .375 \nabla .138$

$\phi .150$  THRU ALL  
 $\square .375 \nabla .138$

ALL DIMENSIONS ARE IN INCHES - INTERPRET DRAWINGS PER ASME Y14.5-1994  
 TOLERANCES UNLESS OTHERWISE SPECIFIED:  
 X.X  $\pm 0.03$   
 X.XX  $\pm 0.01$   
 X.XXX  $\pm 0.005$   
 $\nabla \pm 0.5^\circ$  125/  
 REMOVE ALL BURRS AND SHARP EDGES 0.005 R OR CHAMFER MAX.

NOTES:  
 1. QUESTIONS? LINDSEY.ANDRAD@STUDENTS.OLIN.EDU

UNLESS OTHERWISE SPECIFIED:		
QTY: 1	MATERIAL: 6061 ALUMINUM	
DIMENSIONS ARE IN INCHES.		
ENGINEER	landrade	11/7/2015
DRAWN	landrade	11/7/2015
CHECKED	arodrigues	11/7/2015
THIS DRAWING CONTAINS INFORMATION WHICH IS CONFIDENTIAL AND PROPRIETARY TO ENGR2340, AND MAY NOT BE COPIED, DIVULGED OR USED IN PART OR AS A WHOLE, WITHOUT EXPRESSED WRITTEN CONSENT.		
SIZE	PART NO.	REV
<b>B</b>	<b>SSS-2120-06</b>	<b>A</b>
SCALE 2:1	DO NOT SCALE PRINT	SHEET 1 OF 1



TITLE  
**LINKAGE DRIVING ARM**

8 7 6 5 4 3 2 1

D

C

B

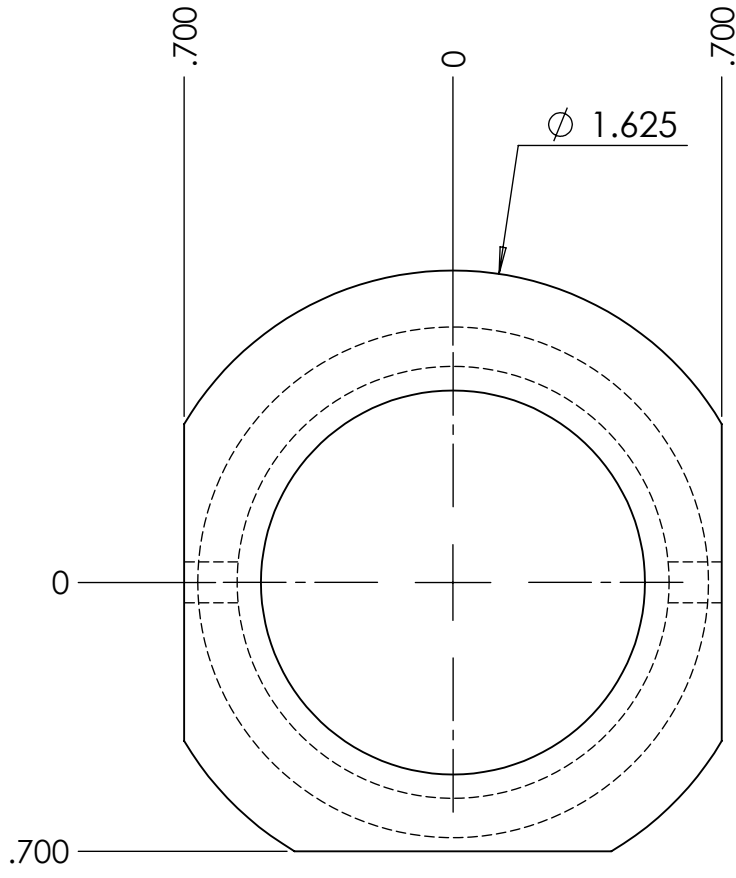
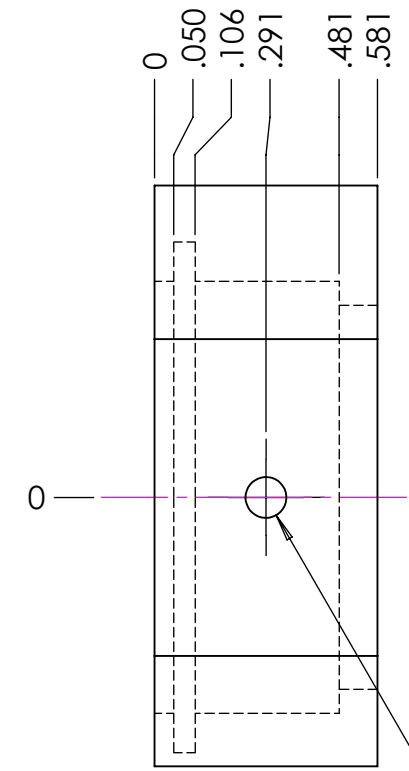
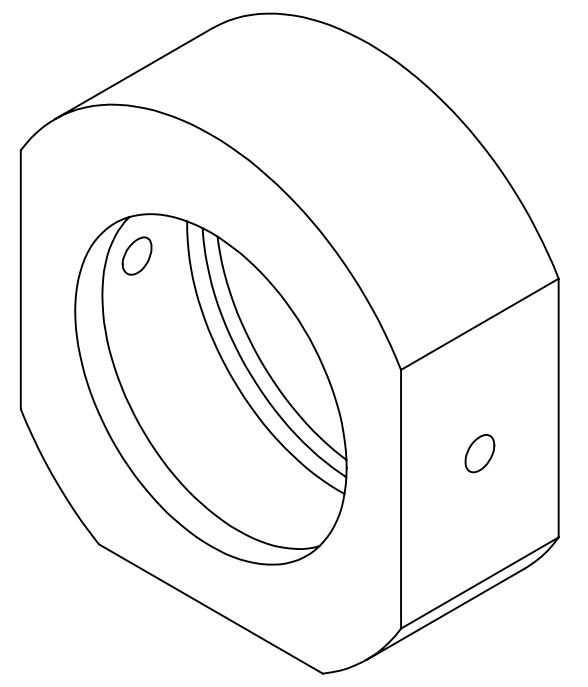
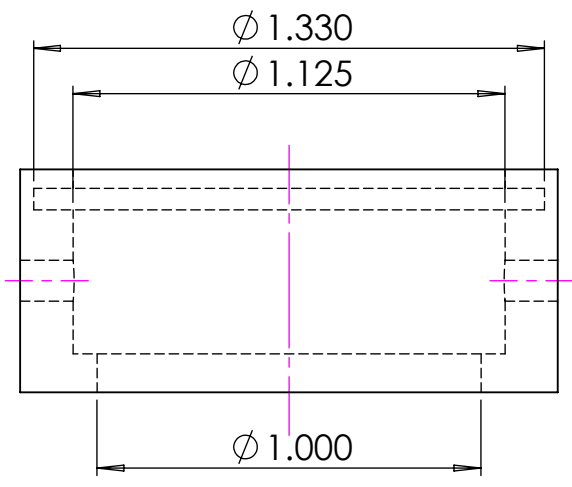
A

D

C

B

A



$\phi .107$  THRU ALL  
6-32 UNC THRU ALL

NOTES:  
1. QUESTIONS? LINDSEY.ANDRADE@STUDENTS.OLIN.EDU

ALL DIMENSIONS ARE IN INCHES - INTERPRET DRAWINGS PER ASME Y14.5-1994  
TOLERANCES UNLESS OTHERWISE SPECIFIED:  
X.X ±0.03  
X.XX ±0.01  
X.XXX ±0.005  
±0.5° 125/

UNLESS OTHERWISE SPECIFIED:		
QTY: 1	MATERIAL: 6061 ALUMINUM	
DIMENSIONS ARE IN INCHES.		
ENGINEER	landrade	11/7/2015
DRAWN	landrade	11/7/2015
CHECKED	arodrigues	11/7/2015

THIS DRAWING CONTAINS INFORMATION WHICH IS CONFIDENTIAL AND PROPRIETARY TO ENGR2340, AND MAY NOT BE COPIED, DIVULGED OR USED IN PART OR AS A WHOLE, WITHOUT EXPRESSED WRITTEN CONSENT.

**Olin College of Engineering**

TITLE: **HORIZONTAL BEARING HOUSING**

SIZE <b>B</b>	PART NO. <b>SSS-3200-05</b>	REV <b>B</b>
SCALE 2:1	DO NOT SCALE PRINT	SHEET 1 OF 1

8 7 6 5 4 3 2 1



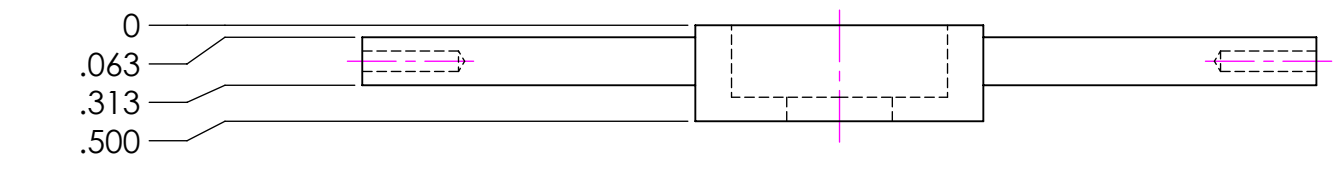
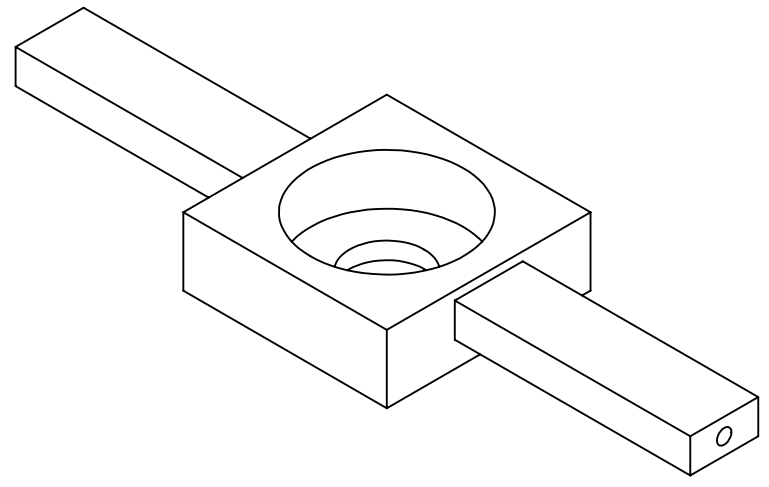
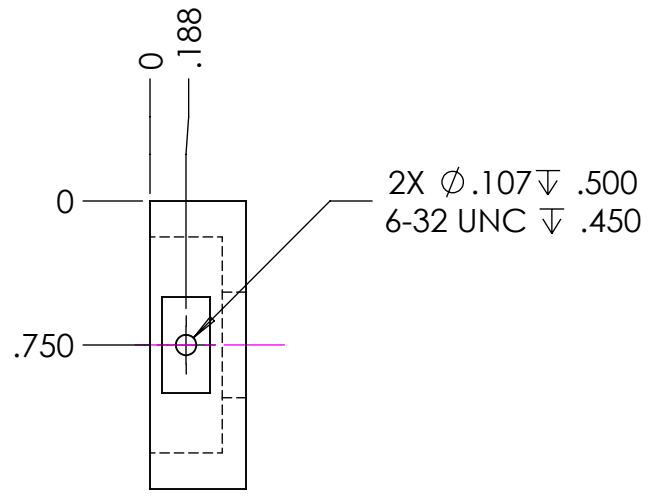
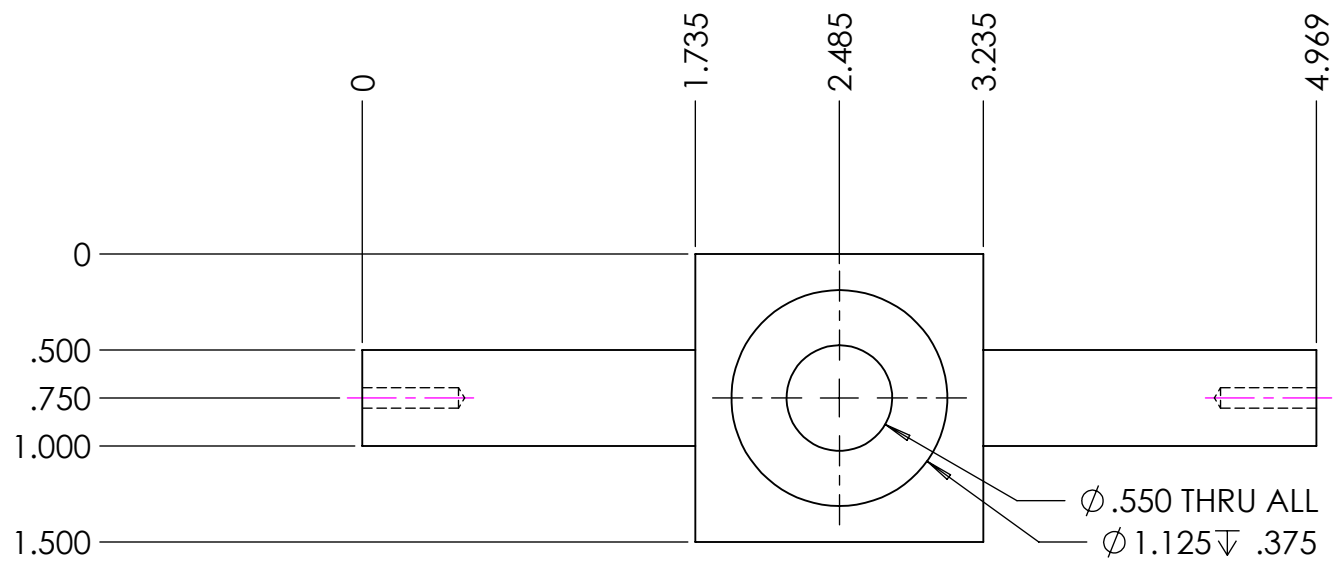
8 7 6 5 4 3 2 1

D

C

B

A



NOTES:  
1. QUESTIONS? LINDSEY.ANDRADE@STUDENTS.OLIN.EDU

ALL DIMENSIONS ARE IN INCHES - INTERPRET DRAWINGS PER ASME Y14.5-1994

TOLERANCES UNLESS OTHERWISE SPECIFIED:  
X.X ±0.03  
X.XX ±0.01  
X.XXX ±0.005

∠ ±0.5° 125/

REMOVE ALL BURRS AND SHARP EDGES 0.005 R OR CHAMFER MAX.

UNLESS OTHERWISE SPECIFIED:		
QTY: 1	MATERIAL: 6061 ALUMINUM	
DIMENSIONS ARE IN INCHES.		
ENGINEER	landrade	11/5/2015
DRAWN	landrade	11/5/2015
CHECKED	arodrigues	11/5/2015
THIS DRAWING CONTAINS INFORMATION WHICH IS CONFIDENTIAL AND PROPRIETARY TO ENGR2340, AND MAY NOT BE COPIED, DIVULGED OR USED IN PART OR AS A WHOLE, WITHOUT EXPRESSED WRITTEN CONSENT.		

**Olin College of Engineering**

TITLE: **VERTICAL BEARING HOUSING**

SIZE: <b>B</b>	PART NO.: <b>SSS-3200-08</b>	REV: <b>A</b>
SCALE: 1:1	DO NOT SCALE PRINT	SHEET 1 OF 1

8 7 6 5 4 3 2 1